

# BEPPE 500 LED

## GRAND SIZE

BULKHEAD  
FLOODLIGHT  
IN-GROUND  
BRICKLIGHT  
BOLLARDS  
GARDEN  
URBAN CLASSIC  
URBAN MODERN  
HIGH-BAY  
POST  
LAMPS

Modern luminaries made of shockproof resin material, UV-rays stabilized, rust and corrosion-free. Suitable for post top or wall installation. Equipped with TÜV approved, long-life and efficient **GX53 LED modular system** in different wattages. Designed according to the international regulations against light pollution (standard UNI 10819). Insulation class II, Protection rating IP65.

*Diffusore moderno realizzato in resina antiurto, stabilizzato ai raggi UV, inattaccabile da ruggine e corrosione. Idoneo per il montaggio a palo o a parete. Provvisto di **sistema modulare a LED GX53** approvato TÜV di lunga durata ed alta efficienza disponibile in diverse potenze. Progettato in ottemperanza alle norme internazionali contro l'inquinamento luminoso (standard UNI 10819). Classe di isolamento II, grado di protezione IP65.*



P60.000.D9L






**BEPPE 500 LED VERSION - COMPONENTS**

**IP65**



**ROOF** complete with decorative pinnacle made of shockproof resin material one piece only, UV-rays stabilized, rust and corrosion-free.

**TETTO** completo di pinnacolo decorativo in un unico pezzo, realizzato in resina antiurto, stabilizzata ai raggi UV, inattaccabile da ruggine e corrosione

**DIFFUSER** made of UV-rays stabilized polymethylmethacrylate (PMMA), one piece only, available in clear or opal colour.

**DIFFUSORE** realizzato in polimetilmetacrilato (PMMA) stabilizzato ai raggi UV, disponibile in colore trasparente o opale.

**CAGE** for post top installation complete with connection ring (one piece only) to be fixed on the luminaries diffuser.

**BIPODE** in un unico pezzo completo di anello di connessione da fissare sul diffusore dell'apparecchio.

**BEPPE 500 LED**

P60.000 \*



**Dimensions and weight**

Height: 850 mm  
Diameter: 600 mm  
Weight: 10,7 Kg  
Junction to support: diameter 60 mm  
Area expose to wind pressure:  
CxS = m<sup>2</sup> 0,246

**Moulded colours:**

Black White Grey

**Diffuser PMMA:**

Clear Opal

**GX53 LED**



- **COST SAVING:** long-life and efficient LED light sources.
- **BUILT-IN DRIVER:** quick and easy lamp replacement
- **GREAT FLEXIBILITY:** GX53 standard lamp holder.
- **FUTURE-PROOFED LUMINARIES:** performances easy to upgrade to latest technology developments.
- **SUITABLE FOR OUTDOOR USE:** built-in driver fully protected against heat and humidity by silicone paste.

\*ADD. SUFFIX

Luminaries supplied with white resin CEILING provided with TÜV approved, long-life and efficient 9x GX53 LED lamps included. Each lamp can be quickly and easily replaced individually, making the luminaries maintenance very simple.



9x 7W <b>63W</b>	<b>7200 Lm</b>	4000 K	.C9L
		3000 K	.C9R
9x 10W <b>90W</b>	<b>10800 Lm</b>	4000 K	.D9L
		3000 K	.D9R

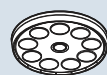
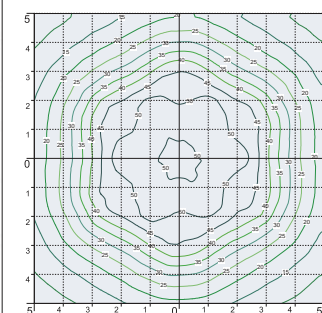
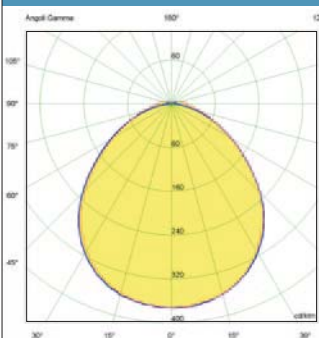
**LED LAMPS**



More technical details about TÜV approved Fumagalli LED Lamps on page 468.

\* ADD THESE SUFFIXES TO THE REFERENCES MENTIONED IN THE CATALOGUE

**PHOTOMETRIC DATA SAMPLE - BEPPE 500 LED**



**SAVE -45%**

9x10W GX53 LED  
**90W**  
(power consumption)

Area: 10x10mt  
Height: 5mt  
**31 lux**

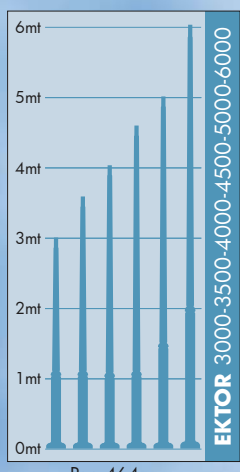
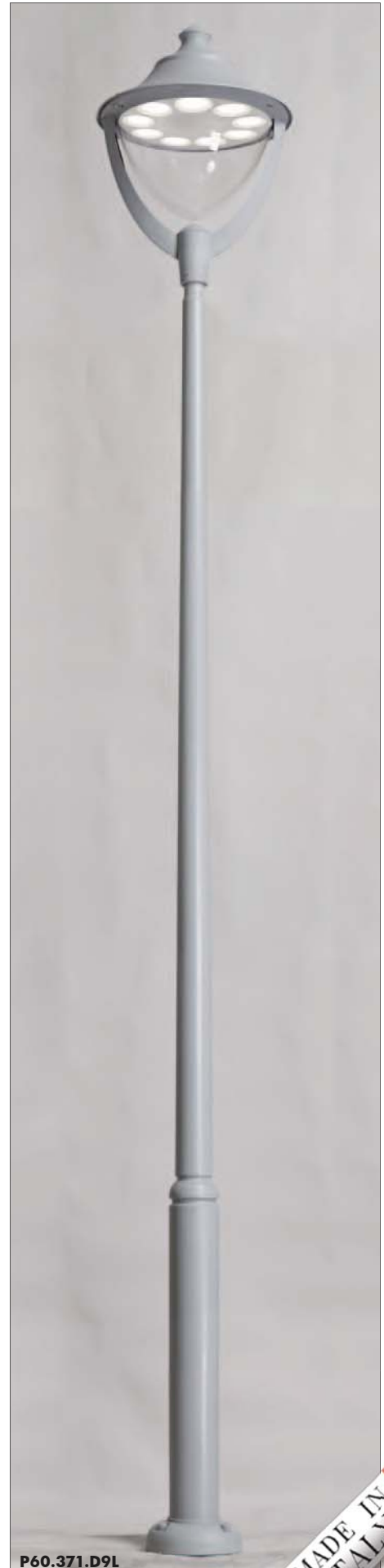


HQI 150W  
**165W**  
(power consumption)

Area: 10x10mt  
Height: 5mt  
**31 lux**

# EKTOR/**BEPPE 500** GRAND SIZE

BULKHEAD  
FLOODLIGHT  
IN-GROUND  
BRICKLIGHT  
BOLLARDS  
GARDEN  
URBAN CLASSIC  
URBAN MODERN  
HIGH-BAY  
POST  
LAMPS



Pag.464





**EKTOR 6000/BEPPE500**  
P60.384.000

Pcs 1  
Kg 66,8  
mc 1,41

600

NEW 6m POST

6735

400

**EKTOR 5000/BEPPE500**  
P60.377.000

Pcs 1  
Kg 51,8  
mc 0,48

600

5735

Ø 265

<b>EKTOR 4000/ BEPPE500</b>	<b>EKTOR 4500/ BEPPE500</b>
P60.371.000	P60.374.000
Pcs 1 Kg 45,8 mc 0,43	Pcs 1 Kg 48,8 mc 0,46

600

5235  
4735

Ø 265

**BEPPE500**  
P60.000

Pcs 1  
Kg 8,9  
mc 0,20

600

850

Ø 60

<b>EKTOR 3000/ BEPPE500</b>	<b>EKTOR 3500/ BEPPE500</b>
P60.364.000	P60.367.000
Pcs 1 Kg 39,8 mc 0,38	Pcs 1 Kg 42,8 mc 0,40

600

4235  
3735

Ø 265

# AKILLE/BEPPE 500 GRAND SIZE

BULKHEAD

FLOODLIGHT

IN-GROUND

BRICKLIGHT

BOLLARDS

GARDEN

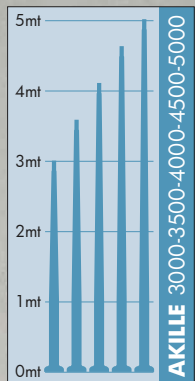
URBAN CLASSIC

URBAN MODERN

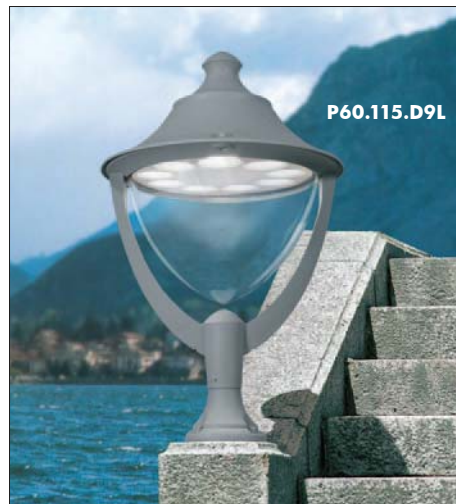
HIGH-BAY

POST

LAMPS



Pag.464



MADE IN  
ITALY



**AKILLE 5000/BEPPE500**  
P60.427.000

Pcs 1  
Kg 51,8  
mc 0,48

600

5735

Ø 265

AKILLE 4000/ BEPPE500	AKILLE 4500/ BEPPE500
P60.421.000	P60.424.000
Pcs 1 Kg 45,8 mc 0,43	Pcs 1 Kg 48,8 mc 0,46

600

5235  
4735

Ø 265

AKILLE 3000/ BEPPE500	AKILLE 3500/ BEPPE500
P60.414.000	P60.417.000
Pcs 1 Kg 39,8 mc 0,38	Pcs 1 Kg 42,8 mc 0,40

600

4235  
3735

Ø 265

**PILAR/BEPPE500**  
P60.253

Pcs 1  
Kg 11,4  
mc 0,24

920

1250

**NEW LOT/BEPPE500**  
P60.115

Pcs 1  
Kg 9,1  
mc 0,21

600

960