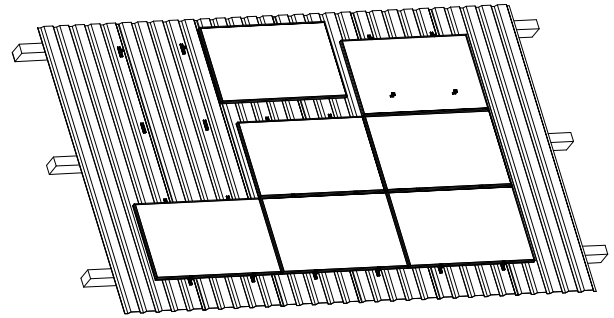


System Datasheet

MS+



General

System	PV-Mounting system for metal sheet roofs
Content	12.5 cm Mounting bracket, fastening material , module clamps
System warranty	10 years
Application area	Pitched metal sheet roof
Roof covering	Trapezoidal and corrugated metal sheet made of steel and aluminum Sandwich trapezoidal sheet according to manufacturer release
Metal sheet thickness	Steel: 0.4 - 2.0 mm / Aluminum: 0.5 - 2.0 mm
Roof slope	min. 5°, max. 45°

System properties

Module tilt	Roof parallel
Material	Stainless steel, Aluminium and EPDM (pre-attached)

Modules

Type	PV-Modules with frame height from 30 to 50 mm
Module size (max)	Length: unlimited, Width: unlimited
Orientation	Horizontal/Landscape

Certifications

MCS012	IK0197/02 Issue: 04
Water tightness	MFPA 5.1/10-535
TÜV	ID000048970 according to 2PFG
ETN	BT120019
Building authority approval	ETA-13-0255, Z-14.1-181, Z-14.1-4, Z-14.1-537 (Fastening material)

Services

PV layout	Provided by Renusol
-----------	---------------------