

ECOVIVI 500 LED

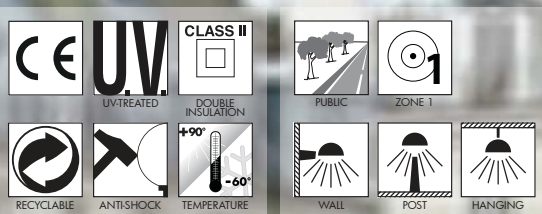
GRAND SIZE

Modern luminaries made of shockproof resin material, UV-rays stabilized, rust and corrosion-free. Suitable for post top, wall and hanging installation. Supplied with flat diffuser granting no upward light emission. Equipped with TÜV approved, long-life and efficient **GX53 LED modular system** in different wattages. Designed according to the international regulations against light pollution (standard UNI 10819 – Installation area: Zone 1). Insulation class II, Protection rating IP65.

Diffusore moderno realizzato in resina antiurto, stabilizzato ai raggi UV, inattaccabile da ruggine e corrosione. Idoneo per il montaggio a palo, a sospensione o a parete. Fornito con diffusore piatto per garantire assenza di emissioni di luce verso l'alto. Provvisto di sistema modulare a LED GX53 approvato TÜV di lunga durata ed alta efficienza disponibile in diverse potenze. Progettato in ottemperanza alle norme internazionali contro l'inquinamento luminoso (standard UNI 10819 – Area di installazione: Zona 1). Classe di isolamento II, grado di protezione IP65.



EV6.000.D9L



BULKHEAD
FLOODLIGHT
IN-GROUND
BRICKLIGHT
BOLLARDS
GARDEN
URBAN CLASSIC
URBAN MODERN
HIGH-BAY
POST
LAMPS



ECOVIVI 500 LED VERSION - COMPONENTS

IP65



ROOF made of shockproof resin material one piece only, UV-rays stabilized, rust and corrosion-free.

TETTO in un unico pezzo, realizzato in resina antiurto, stabilizzata ai raggi UV, inattaccabile da ruggine e corrosione.



DIFFUSER with flat shape to avoid the skyward dispersion of the luminous flux, according to the international regulations against light pollution and in particular the standard UNI 108119. Made of UV-rays stabilized polycarbonate (PC) and available in clear and opal colour.

DIFFUSORE con configurazione piatta per evitare la dispersione verso il cielo del flusso luminoso, in ottemperanza alle norme internazionali sull'inquinamento luminoso ed in particolare la norma UNI 10819. Realizzato in polycarbonato (PC), stabilizzato ai raggi UV e disponibile in colore trasparente o opale.



Decorative connection **RING** to be fixed on the luminaries diffuser.

ANELLO decorative di connessione da fissare sul diffusore dell'apparecchio.



ECOVIVI 500 LED

EV6.000 *



Dimensions and weight

Height: 300 mm
Diameter: 600 mm
Weight: 6,4 Kg
Junction to support: diameter 60 mm
Area expose to wind pressure:
CxS = m² 0,0982

Moulded colours:

Black White Grey

Diffuser PC:

Clear Opal

GX53 LED



- **COST SAVING:** long-life and efficient LED light sources.
- **BUILT-IN DRIVER:** quick and easy lamp replacement
- **GREAT FLEXIBILITY:** GX53 standard lamp holder.
- **FUTURE-PROOFED LUMINARIES:** performances easy to upgrade to latest technology developments.
- **SUITABLE FOR OUTDOOR USE:** built-in driver fully protected against heat and humidity by silicone paste.

*ADD. SUFFIX

Luminaries supplied with white resin CEILING provided with TÜV approved, long-life and efficient 9x GX53 LED lamps included. Each lamp can be quickly and easily replaced individually, making the luminaries maintenance very simple.



9x 7W 63W	7200 Lm	4000 K	.C9L
		3000 K	.C9R
9x 10W 90W	10800 Lm	4000 K	.D9L
		3000 K	.D9R

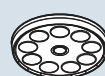
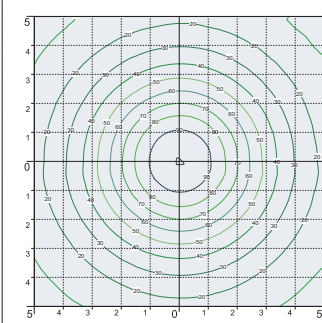
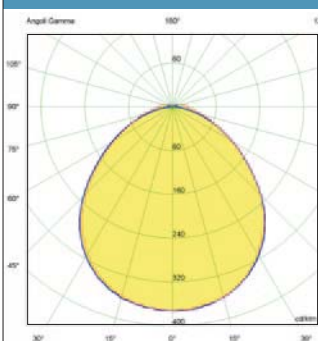
LED LAMPS

More technical details about TÜV approved Fumagalli LED Lamps on page 468.



* ADD THESE SUFFIXES TO THE REFERENCES MENTIONED IN THE CATALOGUE

PHOTOMETRIC DATA SAMPLE - ECOVIVI 500 LED



SAVE -45%

9x10W GX53 LED
90W
(power consumption)

Area: 10x10mt
Height: 5mt
38 lux

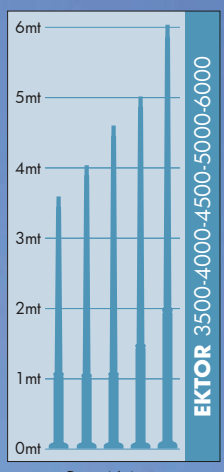


HQI 150W
165W
(power consumption)

Area: 10x10mt
Height: 5mt
38 lux

EKTOR/ECOVIVI 500 GRAND SIZE

BULKHEAD
FLOODLIGHT
IN-GROUND
BRICKLIGHT
BOLLARDS
GARDEN
URBAN CLASSIC
URBAN MODERN
HIGH-BAY
POST
LAMPS



Pag.464



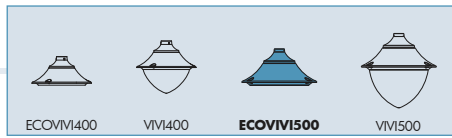
EKTOR 4500 PILAR/ECOVIVI500 1L	EKTOR 5000 PILAR/ECOVIVI500 1L
EV6.374.P10	EV6.377.P10
Pcs 1 Kg 48 mc 0,37	Pcs 1 Kg 51 mc 0,39

EKTOR 3500 PILAR/ECOVIVI500 1L	EKTOR 4000 PILAR/ECOVIVI500 1L
EV6.367.P10	EV6.371.P10
Pcs 1 Kg 42 mc 0,33	Pcs 1 Kg 45 mc 0,35

ECOVIVI 500 EV6.000
Pcs 1 Kg 4,9 mc 0,06

MARIO/ECOVIVI500 EV6.129
Pcs 1 Kg 4,9 mc 0,09





EKTOR 4500 PILAR/ ECOVIVI500 2L	EKTOR 5000 PILAR/ ECOVIVI500 2L
EV6.374.P20	EV6.377.P20
Pcs 1 Kg 55 mc 0,47	Pcs 1 Kg 58 mc 0,49

EKTOR 6000 PILAR/ECOVIVI500 2L
EV6.384.P20
Pcs 1 Kg 73 mc 1,42

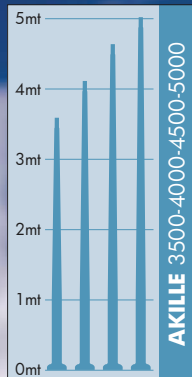
EKTOR 6000 PILAR/ECOVIVI500 1L
EV6.384.P10
Pcs 1 Kg 66 mc 1,32

EKTOR 3500 PILAR/ECOVIVI500 2L	EKTOR 4000 PILAR/ECOVIVI500 2L
EV6.367.P20	EV6.371.P20
Pcs 1 Kg 49 mc 0,43	Pcs 1 Kg 52 mc 0,45

BULKHEAD
FLOODLIGHT
IN-GROUND
BRICKLIGHT
BOLLARDS
GARDEN
URBAN CLASSIC
URBAN MODERN
HIGH-BAY
POST
LAMPS

AKILLE/ECOVIVI 500 GRAND SIZE

BULKHEAD
FLOODLIGHT
IN-GROUND
BRICKLIGHT
BOLLARDS
GARDEN
URBAN CLASSIC
URBAN MODERN
HIGH-BAY
POST
LAMPS



Pag.464

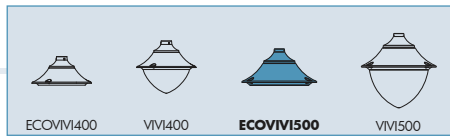


EV6.253.D9L



EV6.421.P10.D9L





NEW LOT/ECOVIVI500
EV6.115

Pcs 1
Kg 4,9
mc 0,09

600

410

PILAR/ECOVIVI500
EV6.253

Pcs 1
Kg 7,7
mc 0,11

920

400

AKILLE 4500 PILAR/ ECOVIVI500 2L	AKILLE 5000 PILAR/ ECOVIVI500 2L
EV6.424.P20	EV6.427.P20

Pcs 1
Kg 55
mc 0,47

1800

5220
4720

Pcs 1
Kg 58
mc 0,49

AKILLE 4500 PILAR/ECOVIVI500 1L	AKILLE 5000 PILAR/ECOVIVI500 1L
EV6.424.P10	EV6.427.P10

Pcs 1
Kg 48
mc 0,37

1030

Pcs 1
Kg 51
mc 0,39

5220
4720

Ø 265

AKILLE 3500 PILAR/ECOVIVI500 1L	AKILLE 4000 PILAR/ECOVIVI500 1L
EV6.417.P10	EV6.421.P10

Pcs 1
Kg 42
mc 0,33

1030

Pcs 1
Kg 45
mc 0,35

4220
3720

Ø 265

AKILLE 3500 PILAR/ECOVIVI500 2L	AKILLE 4000 PILAR/ECOVIVI500 2L
EV6.417.P20	EV6.421.P20

Pcs 1
Kg 49
mc 0,43

1800

4220
3720

Pcs 1
Kg 52
mc 0,45

Ø 265

BULKHEAD

FLOODLIGHT

IN-GROUND

BRICKLIGHT

BOLLARDS

GARDEN

URBAN CLASSIC

URBAN MODERN

HIGH-BAY

POST

LAMPS