

REMO 500 LED

GRAND SIZE

Modern luminaries made of shockproof resin material, UV-rays stabilized, rust and corrosion-free. Suitable for post top or wall installation. Equipped with TÜV approved, long-life and efficient **GX53 LED modular system** in different wattages. Insulation class II, Protection rating IP65.

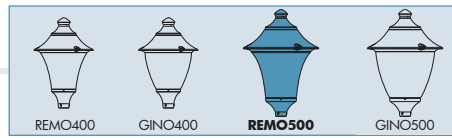
*Diffusore moderno realizzato in resina antiurto, stabilizzato ai raggi UV, inattaccabile da ruggine e corrosione. Idoneo per il montaggio a palo o a parete. Provvisto di **sistema modulare a LED GX53** approvato TÜV di lunga durata ed alta efficienza disponibile in diverse potenze. Classe di isolamento II, grado di protezione IP65.*



R60.000.D9L

- BULKHEAD
- FLOODLIGHT
- IN-GROUND
- BRICKLIGHT
- BOLLARDS
- GARDEN
- URBAN CLASSIC
- URBAN MODERN
- HIGH-BAY
- POST
- LAMPS

MADE IN ITALY



REMO 500 LED VERSION - COMPONENTS

IP65



ROOF complete with decorative pinnacle made of shockproof resin material, UV-rays stabilized, rust and corrosion-free.

TETTO completo di pinnacolo decorativo, realizzato in resina antiurto, stabilizzata ai raggi UV, inattaccabile da ruggine e corrosione.

DIFFUSER made of UV-rays stabilized polymethylmethacrylate (PMMA), one piece only, available in clear or opal colour.

DIFFUSORE realizzato in polimetilmetacrilato (PMMA) stabilizzato ai raggi UV, disponibile in colore trasparente o opale.

Decorative connection **RING** to be fixed on the luminaries diffuser.

ANELLO decorativo di connessione da fissare sul diffusore dell'apparecchio.

BASE made in shockproof resin material consisting of a support for post top installation (Ø 60mm) and of a white resin **CONE REFLECTOR**, to direct downwards the lighting output. A silicone rubber gasket assure the protection against external agents.

BASE dell'apparecchio realizzata in resina antiurto composta da un supporto per permettere il fissaggio dell'apparecchio a palo (Ø 60mm) e da un **CONO** riflettente in resina bianca per indirizzare verso il basso il flusso luminoso. Una guarnizione in gomma silicica garantisce la protezione dagli agenti esterni.

REMO 500 LED

R60.000 *



Dimensions and weight

Height: 850 mm
Diameter: 600 mm
Weight: 10,3 Kg
Junction to support: diameter 60 mm
Area expose to wind pressure:
CxS = m² 0,238

Moulded colours:

Black White Grey

Diffuser PMMA:

Clear Opal

GX53 LED



- **COST SAVING:** long-life and efficient LED light sources.
- **BUILT-IN DRIVER:** quick and easy lamp replacement
- **GREAT FLEXIBILITY:** GX53 standard lamp holder.
- **FUTURE-PROOFED LUMINARIES:** performances easy to upgrade to latest technology developments.
- **SUITABLE FOR OUTDOOR USE:** built-in driver fully protected against heat and humidity by silicone paste.

*ADD. SUFFIX

Luminaries supplied with white resin CEILING provided with TÜV approved, long-life and efficient 9x GX53 LED lamps included. Each lamp can be quickly and easily replaced individually, making the luminaries maintenance very simple.



9x 7W 63W	7200 Lm	4000 K	.C9L
		3000 K	.C9R
9x 10W 90W	10800 Lm	4000 K	.D9L
		3000 K	.D9R

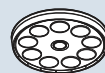
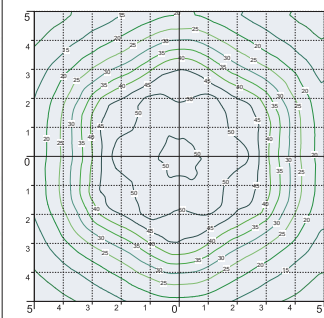
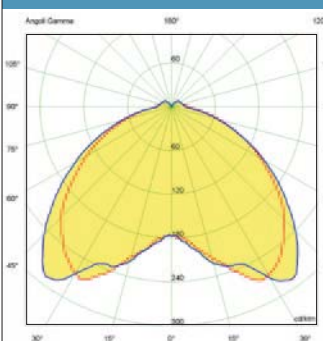
LED LAMPS



More technical details about TÜV approved Fumagalli LED Lamps on page 468.

* ADD THESE SUFFIXES TO THE REFERENCES MENTIONED IN THE CATALOGUE

PHOTOMETRIC DATA SAMPLE - REMO 500 LED



SAVE -62%

9x7W GX53 LED
63W
(power consumption)

Area: 10x10mt
Height: 5mt
20 lux

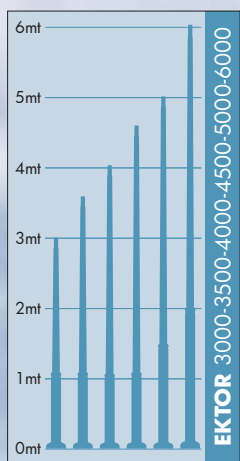
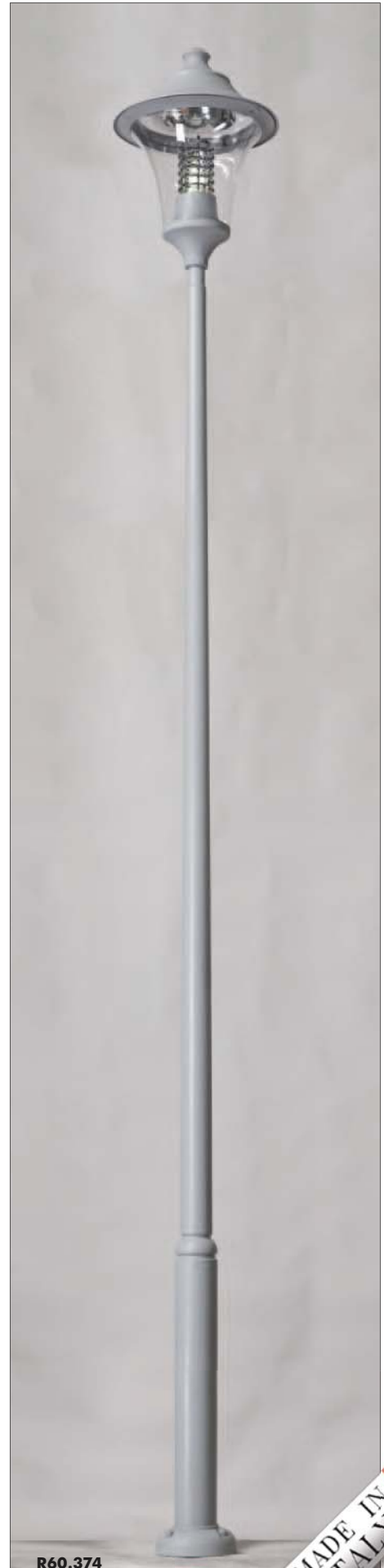


HQI 150W
165W
(power consumption)

Area: 10x10mt
Height: 5mt
19 lux

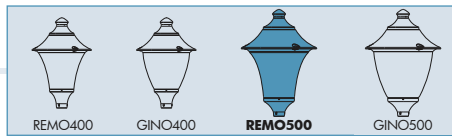
EKTOR/REMO 500 GRAND SIZE

BULKHEAD
FLOODLIGHT
IN-GROUND
BRICKLIGHT
BOLLARDS
GARDEN
URBAN CLASSIC
URBAN MODERN
HIGH-BAY
POST
LAMPS



Pag. 464





EKTOR 6000/REMO500
R60.384.000

Pcs 1
Kg 65,5
mc 1,32

600

NEW 6m POST

6735

400

EKTOR 5000/REMO500
R60.377.000

Pcs 1
Kg 50,5
mc 0,39

600

5735

Ø 265

EKTOR 4000/REMO500 R60.371.000	EKTOR 4500/REMO500 R60.374.000
Pcs 1 Kg 44,5 mc 0,33	Pcs 1 Kg 47,5 mc 0,36

600

5235
4735

Ø 265

REMO500
R60.000

Pcs 1
Kg 8,5
mc 0,11

600

850

Ø 60

EKTOR 3000/REMO500 R60.364.000	EKTOR 3500/REMO500 R60.367.000
Pcs 1 Kg 38,5 mc 0,28	Pcs 1 Kg 41,5 mc 0,31

600

4235
3735

Ø 265

BULKHEAD

FLOODLIGHT

IN-GROUND

BRICKLIGHT

BOLLARDS

GARDEN

URBAN CLASSIC

URBAN MODERN

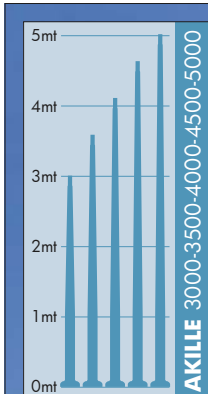
HIGH-BAY

POST

LAMPS

AKILLE/**REMO 500**
GRAND SIZE

BULKHEAD
FLOODLIGHT
IN-GROUND
BRICKLIGHT
BOLLARDS
GARDEN
URBAN CLASSIC
URBAN MODERN
HIGH-BAY
POST
LAMPS



Pag.464



R60.421.D9L

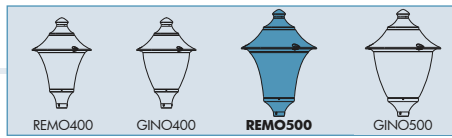


R60.253



R60.115





AKILLE 5000/REMO500
R60.427.000

Pcs 1
Kg 50,5
mc 0,39

600

5735

Ø 265

AKILLE 4000/REMO500 R60.421.000	AKILLE 4500/REMO500 R60.424.000
Pcs 1 Kg 44,5 mc 0,33	Pcs 1 Kg 47,5 mc 0,36

600

5235

4735

Ø 265

AKILLE 3000/REMO500 R60.414.000	AKILLE 3500/REMO500 R60.417.000
Pcs 1 Kg 38,5 mc 0,28	Pcs 1 Kg 41,5 mc 0,31

600

4235

3735

Ø 265

PILAR/REMO500
R60.253

Pcs 1
Kg 11,5
mc 0,14

920

1250

NEW LOT/REMO500
R60.115

Pcs 1
Kg 9,2
mc 0,12

600

960

BULKHEAD

FLOODLIGHT

IN-GROUND

BRICKLIGHT

BOLLARDS

GARDEN

URBAN CLASSIC

URBAN MODERN

HIGH-BAY

POST

LAMPS