

### UCG275-12



### Physical Specification

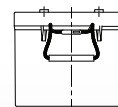
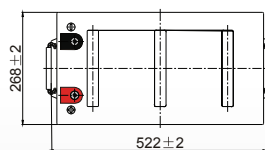
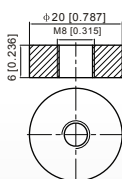
Part Number:	<b>UCG275-12</b>
Length:	<b>522 ± 2 mm</b>
Width:	<b>268 ± 2 mm</b>
Container Height:	<b>220 ± 2 mm</b>
Total Height (with terminal):	<b>226 ± 2 mm</b>
Approx Weight:	<b>Approx 73.0kg</b>

### Specifications

	Nominal Voltage	12V
Terminal Type	Standard Terminal	F11
	Optional Terminal	-
Container Material	Standard Option	ABS
	Flame Retardant Option (FR)	ABS(UL94:VO)
Rated Capacity	270.0 AH/13.4A	(20hr, 1.80V/cell, 25°C / 77°F)
	250.0 AH/25.0A	(10hr, 1.80V/cell, 25°C / 77°F)
	219.5 AH/43.9A	(5hr, 1.75V/cell, 25°C / 77°F)
	198.9 AH/66.3A	(3hr, 1.75V/cell, 25°C / 77°F)
	161.5 AH/161.5A	(1hr, 1.60V/cell, 25°C / 77°F)
Max Discharge Current	2500A (5s)	
Internal Resistance	Approx 2.5mΩ	
Discharge Characteristics	Operating Temp. Range	Discharge: -15 ~ 50°C (5 ~ 122°F)
		Charge: 0 ~ 40°C (5 ~ 104°F)
		Storage: -15 ~ 40°C (5 ~ 104°F)
	Nominal Operating Temp. Range	25 ± 3°C (77 ± 5°F)
	Cycle Use	Initial Charging Current less than 75.0A Voltage 14.4V ~ 15.0V at 25°C (77°F) Temp. Coefficient -30mV/°C
	Standby Use	No limit on Initial Charging Current Voltage 13.5V ~ 13.8V at 25°C (77°F) Temp. Coefficient -20mV/°C
Capacity affected by Temperature	40°C (104°F) 103%	
	25°C (77°F) 100%	
	0°C (32°F) 86%	
Design Floating Life at 20°C	15 Years	
Self Discharge	Ultracell batteries may be stored for up to 6 months at 25°C(77°F) and then a refresh charge is required. For higher temperatures the time interval will be shorter.	

### Dimensions

#### F11 Terminal



ALL DATA IS SUBJECT TO CHANGE WITHOUT NOTICE

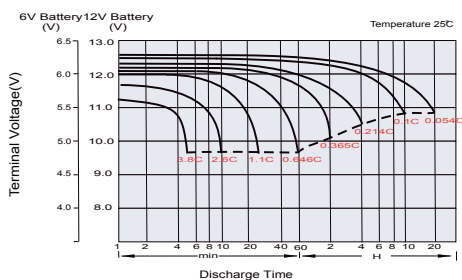
### Constant Current Discharge (Amperes) at 25°C (77°F)

F.V/Time	10min	15min	20min	30min	45min	1h	2h	3h	4h	5h	6h	8h	10h	20h
1.85V/cell	366.0	308.0	269.1	193.7	153.8	124.8	77.5	60.5	49.0	39.8	34.7	28.3	23.6	13.3
1.80V/cell	467.7	372.1	318.1	228.5	178.9	139.8	84.6	65.1	52.3	42.7	37.2	30.1	25.0	13.4
1.75V/cell	/	406.5	342.2	237.2	185.7	146.3	87.8	66.3	53.5	43.9	38.3	30.6	25.3	13.5
1.70V/cell	/	434.0	359.7	246.9	193.1	150.9	91.3	68.1	54.9	45.0	39.1	31.0	25.5	13.8
1.65V/cell	/	461.5	382.1	260.5	197.9	156.0	93.8	71.0	56.8	46.2	39.9	31.5	26.0	14.0
1.60V/cell	/	/	407.0	275.0	206.3	161.5	97.0	73.2	58.6	47.7	40.8	31.8	26.3	14.1

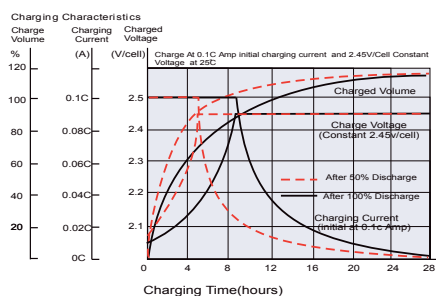
### Constant Power Discharge (Watts) at 25°C (77°F)

F.V/Time	10min	15min	20min	30min	45min	1h	2h	3h	4h	5h	6h	8h	10h	20h
1.85V/cell	682.9	580.6	512.9	372.1	297.6	242.3	151.1	118.1	95.9	78.2	68.6	56.1	46.7	26.6
1.80V/cell	861.0	691.1	597.1	433.8	343.2	269.8	163.9	126.5	101.9	83.7	73.3	59.4	49.5	26.8
1.75V/cell	/	747.7	637.0	448.1	354.5	281.2	169.5	128.4	104.0	85.7	75.2	60.3	49.9	27.0
1.70V/cell	/	792.4	665.6	464.6	367.6	289.3	175.8	131.7	106.5	87.6	76.6	61.1	50.4	27.5
1.65V/cell	/	837.1	703.8	487.9	375.4	298.1	180.2	137.0	109.9	90.0	78.2	62.0	51.4	27.8
1.60V/cell	/	/	742.0	510.1	387.7	306.2	185.1	140.5	112.9	92.5	79.7	62.6	51.9	27.9

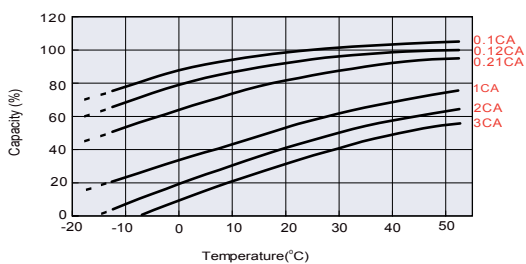
### Discharge Characteristics



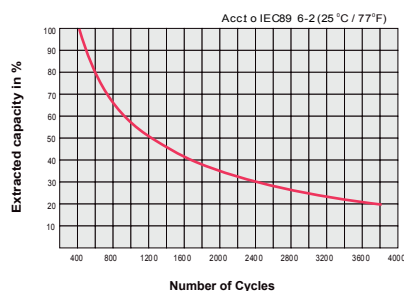
### Charging Characteristics



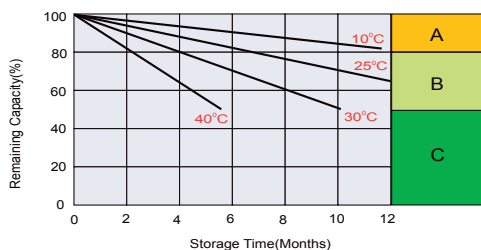
### Temperature Effects in Relation to Battery Capacity



### Cycle Life in Relation to Depth of Discharge



### Self Discharge Characteristics



**A** No supplementary charge required  
(Carry out supplementary charge before use if 100% capacity is required.)

Supplementary charge required before use. Optional charging way as below:

- B**
1. Charged for above 3 days at limited current 0.25CA and constant volatge 2.25V/cell.
  2. Charged for above 20hours at limited current 0.25CA and constant volatge 2.45V/cell.
  3. Charged for 8~10hours at limited current 0.05CA .

**C** Supplementary charge may often fail to recover the capacity.  
The battery should never be left standing till this is reached.

ALL DATA IS SUBJECT TO CHANGE WITHOUT NOTICE