

# VIVI 400 LED

## LARGE SIZE

Modern luminaries made of shockproof resin material, UV-rays stabilized, rust and corrosion-free. Suitable for post top, wall and hanging installation. Equipped with TÜV approved, long-life and efficient **GX53 LED modular system** in different wattages. Designed according to the international regulations against light pollution (standard UNI 10819). Insulation class II, Protection rating IP65.

*Diffusore moderno realizzato in resina antiurto, stabilizzato ai raggi UV, inattaccabile da ruggine e corrosione. Idoneo per il montaggio a palo, a sospensione o a parete. Provvisto di **sistema modulare a LED GX53** approvato TÜV di lunga durata ed alta efficienza disponibile in diverse potenze. Progettato in ottemperanza alle norme internazionali contro l'inquinamento luminoso (standard UNI 10819). Classe di isolamento II, grado di protezione IP65.*



V50.000.D6L

BULKHEAD  
FLOODLIGHT  
IN-GROUND  
BRICKLIGHT  
BOLLARDS  
GARDEN  
URBAN CLASSIC  
URBAN MODERN  
HIGH-BAY  
POST  
LAMPS




**VIVI 400 LED VERSION - COMPONENTS**

**IP65**



**ROOF** made of shockproof resin material one piece only, UV-rays stabilized, rust and corrosion-free.

**TETTO** in un unico pezzo, realizzato in resina antiurto, stabilizzata ai raggi UV, inattaccabile da ruggine e corrosione.



**DIFFUSER** made of UV-rays stabilized polymethylmethacrylate (PMMA), one piece only, available in clear or opal colour.

**DIFFUSORE** realizzato in polimetilmetacrilato (PMMA) stabilizzato ai raggi UV, disponibile in colore trasparente o opale.



Decorative connection **RING** to be fixed on the luminaries diffuser.

**ANELLO** decorativo di connessione da fissare sul diffusore dell'apparecchio.

**VIVI 400 LED**

V50.000 \*



**Dimensions and weight**

Height: 420 mm  
Diameter: 480 mm  
Weight: 4,9 Kg  
Junction to support: Ø 60 mm  
Area expose to wind pressure: CxS = m<sup>2</sup> 0,1449

**Moulded colours:**

Black White Grey

**Diffuser PMMA:**

Clear Opal

**GX53 LED**



- **COST SAVING:** long-life and efficient LED light sources.
- **BUILT-IN DRIVER:** quick and easy lamp replacement
- **GREAT FLEXIBILITY:** GX53 standard lamp holder.
- **FUTURE-PROOFED LUMINARIES:** performances easy to upgrade to latest technology developments.
- **SUITABLE FOR OUTDOOR USE:** built-in driver fully protected against heat and humidity by silicone paste.

\*ADD. SUFFIX

Luminaries supplied with white resin CEILING provided with TÜV approved, long-life and efficient **6x GX53 LED lamps included**. Each lamp can be quickly and easily replaced individually, making the luminaries maintenance very simple.



6x 7W <b>42W</b>	<b>4800 Lm</b>	4000 K	.C6L
		3000 K	.C6R
6x 10W <b>60W</b>	<b>7200 Lm</b>	4000 K	.D6L
		3000 K	.D6R

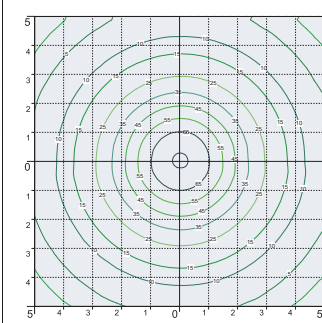
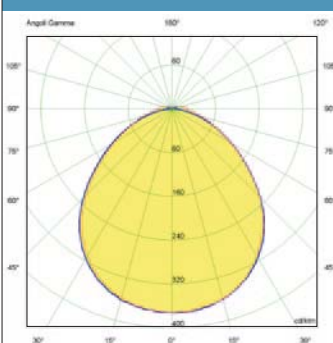
**LED LAMPS**

More technical details about TÜV approved Fumagalli LED Lamps on page 468.



\* ADD THESE SUFFIXES TO THE REFERENCES MENTIONED IN THE CATALOGUE

**PHOTOMETRIC DATA SAMPLE - VIVI 400 LED**



**SAVE -50%**

6x7W GX53 LED  
**42W**  
(power consumption)

Area: 10x10mt  
Height: 3,5mt  
**20 lux**

=



**VIVI 400 E27**

HQI 70W  
**84W**  
(power consumption)

Area: 10x10mt  
Height: 3,5mt  
**20 lux**

# VIVI 400

## LARGE SIZE

BULKHEAD  
FLOODLIGHT  
IN-GROUND  
BRICKLIGHT  
BOLLARDS  
GARDEN  
URBAN CLASSIC  
URBAN MODERN  
HIGH-BAY  
POST  
LAMPS





**MIDIPIALAR/VIVI400**  
V50.254

Pcs 1  
Kg 5,5  
mc 0,092

**EKTOR 3500**      **EKTOR 4000**  
**MIDIPIALAR/VIVI400 1L**    **MIDIPIALAR/VIVI400 1L**  
V50.367.A10      V50.371.A10

Pcs 1      Pcs 1  
Kg 38,7      Kg 41,7  
mc 0,284      mc 0,314

**VIVI 400**  
V50.000

Pcs 1  
Kg 3,7  
mc 0,09

**MARIO/VIVI400**  
V50.129

Pcs 1  
Kg 4,5  
mc 0,07

**EKTOR 2500 MIDIPIALAR/VIVI400 1L**  
V50.361.A10

Pcs 1  
Kg 25,7  
mc 0,235

**EKTOR 3000 MIDIPIALAR/VIVI400 1L**  
V50.364.A10

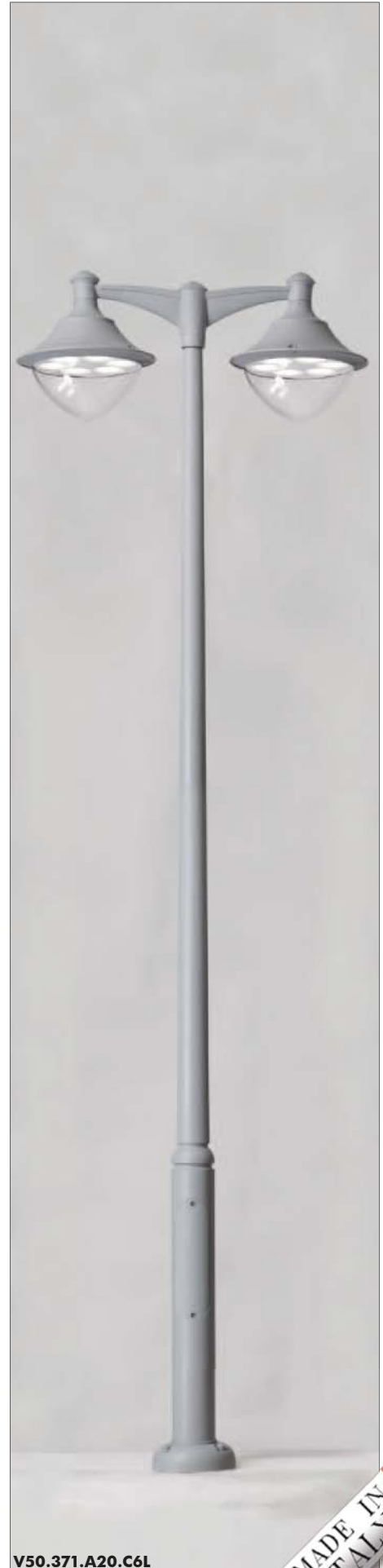
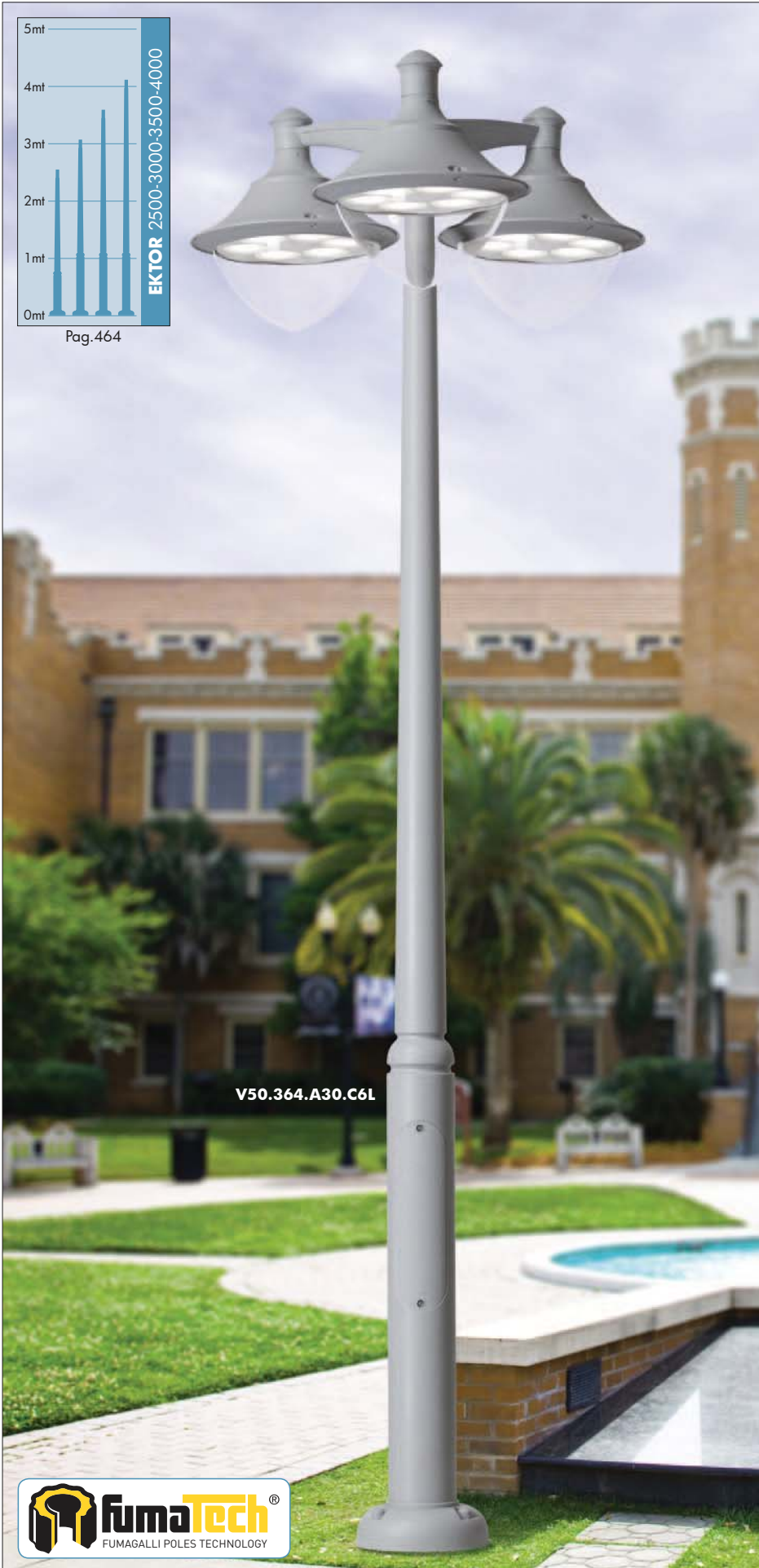
Pcs 1  
Kg 35,7  
mc 0,262

**NEW LOT/VIVI400**  
V50.115

Pcs 1  
Kg 4,5  
mc 0,071

**EKTOR/VIVI 400**  
**LARGE SIZE**

BULKHEAD  
 FLOODLIGHT  
 IN-GROUND  
 BRICKLIGHT  
 BOLLARDS  
 GARDEN  
 URBAN CLASSIC  
 URBAN MODERN  
 HIGH-BAY  
 POST  
 LAMPS





EKTOR 3500 MIDIPILAR/VIVI400 2L		EKTOR 4000 MIDIPILAR/VIVI400 2L	
V50.367.A20		V50.371.A20	
Pcs 1 Kg 44,1 mc 0,358		Pcs 1 Kg 47,1 mc 0,385	

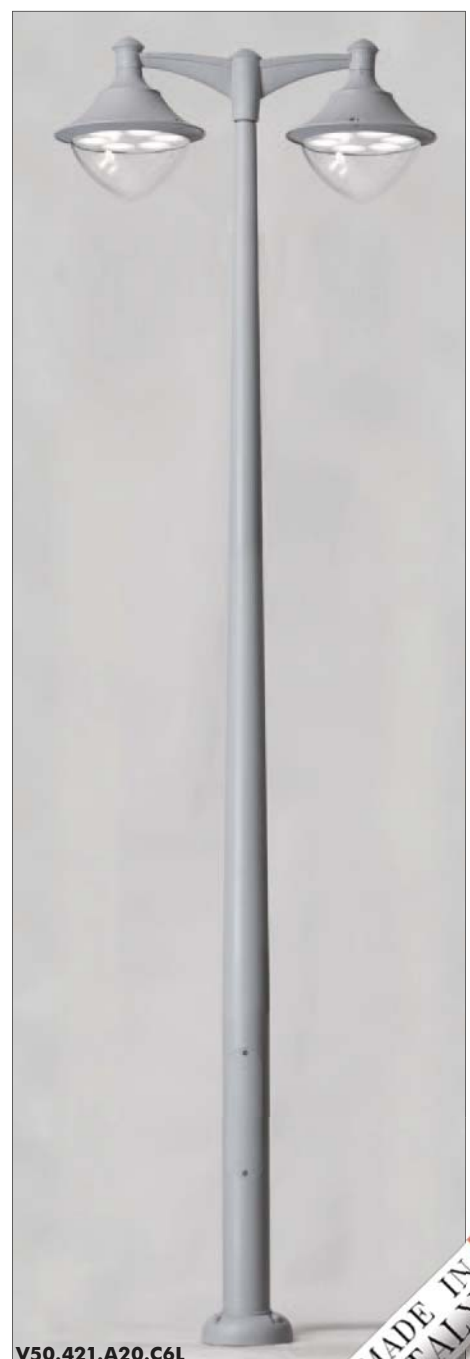
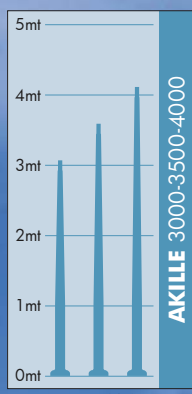
EKTOR 3500 MIDIPILAR/VIVI400 3L		EKTOR 4000 MIDIPILAR/VIVI400 3L	
V50.367.A30		V50.371.A30	
Pcs 1 Kg 49,7 mc 0,55		Pcs 1 Kg 52,7 mc 0,576	

EKTOR 2500 MIDIPILAR/VIVI400 2L		EKTOR 3000 MIDIPILAR/VIVI400 2L	
V50.361.A20		V50.364.A20	
Pcs 1 Kg 31,1 mc 0,306		Pcs 1 Kg 41,1 mc 0,332	

EKTOR 2500 MIDIPILAR/VIVI400 3L		EKTOR 3000 MIDIPILAR/VIVI400 3L	
V50.361.A30		V50.364.A30	
Pcs 1 Kg 36,7 mc 0,497		Pcs 1 Kg 46,7 mc 0,523	

**AKILLE/VIVI 400**  
**LARGE SIZE**

BULKHEAD  
 FLOODLIGHT  
 IN-GROUND  
 BRICKLIGHT  
 BOLLARDS  
 GARDEN  
 URBAN CLASSIC  
 URBAN MODERN  
 HIGH-BAY  
 POST  
 LAMPS





AKILLE 3500 MIDIPIILAR/VIVI400 1L	AKILLE 4000 MIDIPIILAR/VIVI400 1L
V50.417.A10	V50.421.A10
Pcs 1 Kg 38,7 mc 0,284	Pcs 1 Kg 41,7 mc 0,314

AKILLE 3500 MIDIPIILAR/VIVI400 2L	AKILLE 4000 MIDIPIILAR/VIVI400 2L
V50.417.A20	V50.421.A20
Pcs 1 Kg 44,1 mc 0,358	Pcs 1 Kg 47,1 mc 0,385

AKILLE 3500 MIDIPIILAR/VIVI400 3L	AKILLE 4000 MIDIPIILAR/VIVI400 3L
V50.417.A30	V50.421.A30
Pcs 1 Kg 49,7 mc 0,55	Pcs 1 Kg 52,7 mc 0,576

AKILLE 3000 MIDIPIILAR/VIVI400 1L
V50.414.A10
Pcs 1 Kg 35,7 mc 0,262

AKILLE 3000 MIDIPIILAR/VIVI400 2L
V50.414.A20
Pcs 1 Kg 41,1 mc 0,332

AKILLE 3000 MIDIPIILAR/VIVI400 3L
V50.414.A30
Pcs 1 Kg 46,7 mc 0,523