

## RS1

Article No. R420080

### Product properties

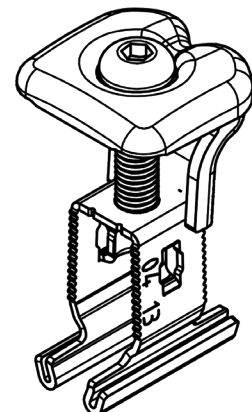
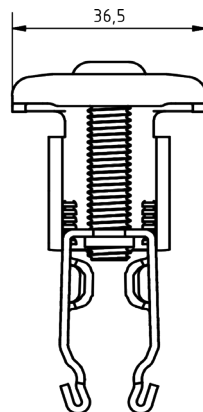
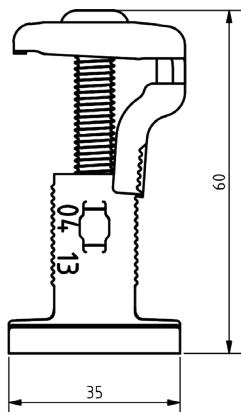
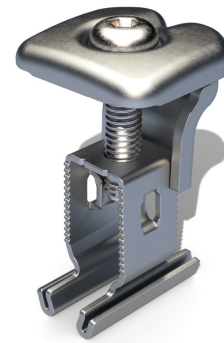
Dimensions	35x36,5x60 mm
Weight	0,080 kg
Colour	blank
Pre-assembled	Yes
Type of clamping	Inside clamping

### Application properties

Function	Mid- and end clamp
Max. fastening torque	12 Nm
Clamping range	30.0 - 50.0 mm
Type of modules	Framed modules
Drive	Hexagon socket 5 mm
Can be used with product group	VS+; MS+; TriSole; InterSole; VarioSole SE

### Material

Material	Steel
Coating	Zinc-nickel coating
Application area	C3



## RS1

Article No. R420080-B

### Product properties

Dimensions	35x36,5x60 mm
Weight	0,080 kg
Colour	black
Pre-assembled	Yes
Type of clamping	Inside clamping

### Application properties

Function	Mid- and end clamp
Max. fastening torque	12 Nm
Clamping range	30.0 - 50.0 mm
Type of modules	Framed modules
Drive	Hexagon socket 5 mm
Can be used with product group	VS+; MS+; TriSole; InterSole; VarioSole SE

### Material

Material	Steel
Coating	Zinc-nickel coating KTL coating
Application area	C3

